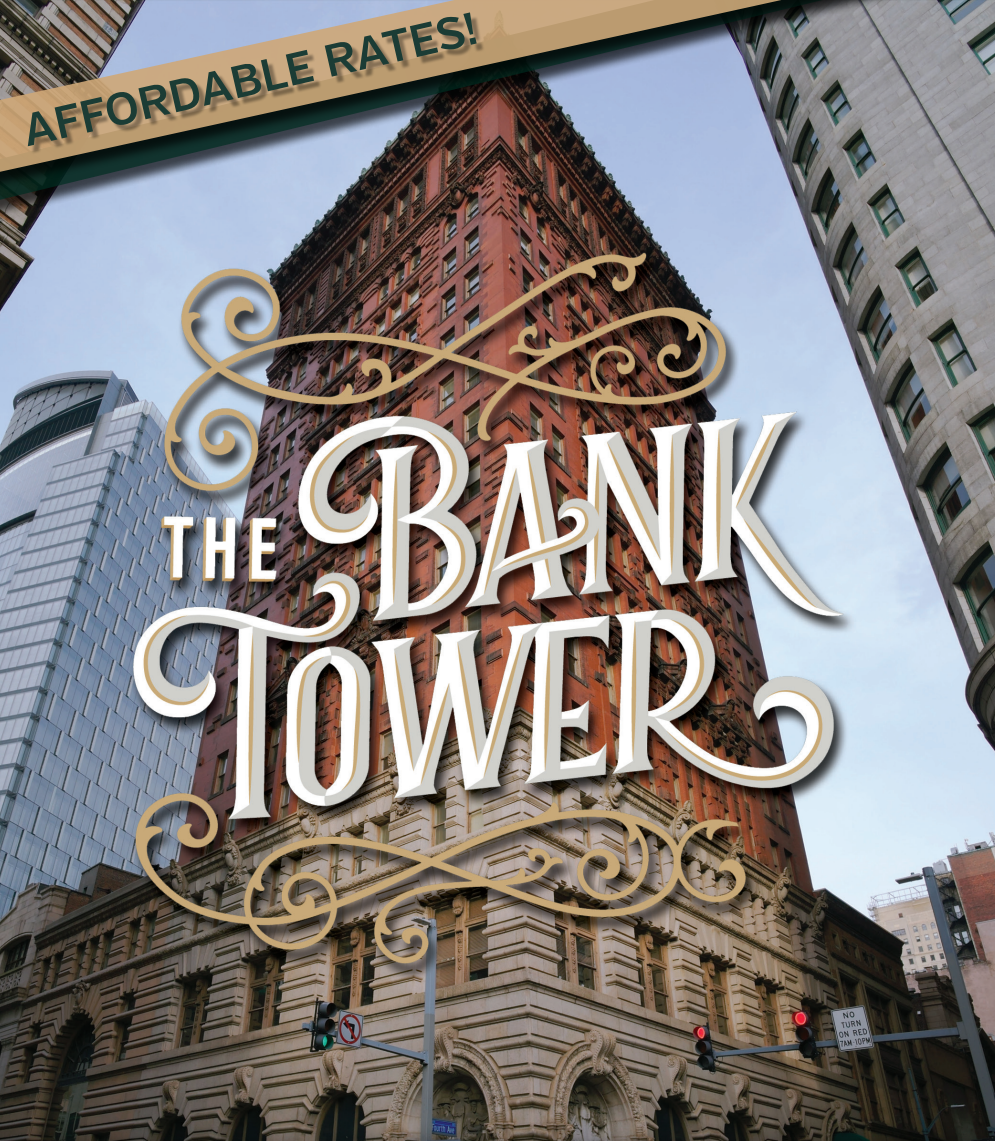


AFFORDABLE RATES!

THE BANK TOWER



The Bank Tower | Suite 1000 Pittsburgh CBD

OVERVIEW

SVN Three Rivers Commercial Advisors is pleased to present unique office space for lease at the Bank Tower. Suite 1000 consists of approximately 787 square feet.

The Bank Tower is centrally located in the heart of the Market Square District in Downtown Pittsburgh at the corner of Fourth Avenue and Wood Street. This location provides quick and easy access to all major businesses, banking, legal and government centers, as well as mass transportation, shopping, restaurants, and coffee. Several parking garages, numerous outdoor lots, and the Wharf parking area are all within walking distance.

OFFERING SUMMARY

Lease Rate:	\$16.00 PSF [Full Service]
Available SF:	787 SF
Building Size:	82,000 SF
Submarket:	Pittsburgh CBD

PROPERTY HIGHLIGHTS

- On-site security
- Abundant natural light and historic charm
- Building conference room
- On-site storage available
- Offers a blend of world elegance and efficient, unique office space
- Full service leases include professional management, cleaning, and utilities



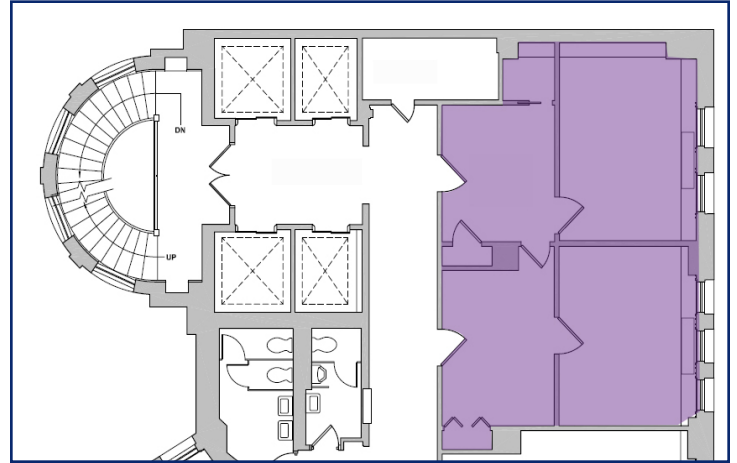
Richard L. Beynon
412.536.5036 | 412.298.2236
rbeynon@svn.com



Lisa M. Tiche
412.623.8233 | 412.477.7156
ltiche@mcknightrp.com

THE BANK TOWER

307 Fourth Avenue | Pittsburgh, PA 15222



Located in the heart of Downtown Pittsburgh's Market Square District



Richard L. Beynon
412.536.5036 | 412.298.2236
rbeynon@svn.com



Lisa M. Tiche
412.623.8233 | 412.477.7156
ltiche@mcknighttrp.com